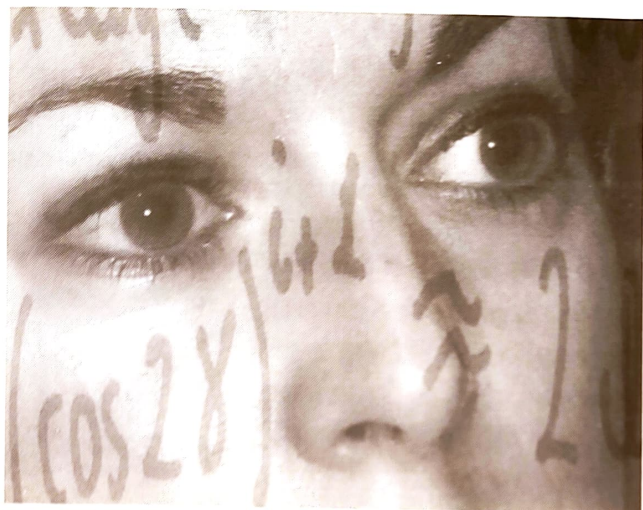




# kanata theatre

presents

# Proof



by  
David  
Auburn

Directed by Sandy Wynne

## THE CAST

ROBERT

David Plouffe

CATHERINE

Cheryl Zimmer

HAL

Paul Arbour

CLAIRE

Katie Betts

The play takes place on the back porch of a house in Chicago.  
Time is the present.

Originally produced by the Manhattan Theatre Club on May 23, 2000.  
Subsequently produced on Broadway by the Manhattan Theatre Club,  
Lynne Meadow, Artistic Director, Barry Grove, Executive Producer,  
Roger Berlind, Carole Shorenstein Hays, Jujamcyn Theatres,  
Ostar Enterprises, Daryl Roth and Stuart Thompson on October 24, 2000.

There will be one intermission. Coffee, soft drinks and desserts will be available.  
Please be considerate: ensure that pagers and cellular phones are turned off.  
The use of cameras or tape recorders during the performance is not permitted.

# PRODUCTION STAFF

PRODUCTION MANAGER	Anne-Marie Davies
STAGE MANAGER	Gwendy Tolley
ASSISTANT STAGE MANAGERS	Michèle Baddoo, Christine Feldman
SET DESIGN	Ben Tolley
CONSTRUCTION	Ben Tolley, Don MacNeil, Wilf Pilsworth Bill Williams, Peter Williams, Derek Willsher
PAINTING	Ben Tolley, Kendrick Abell Anne-Marie Frigon, Adell Hay, Graham Hay, Carol Hussey, Wilf Pilsworth, Eric Schmidt Stephen Tolley, Derek Willsher
COSTUMES	Brenda Parr
assisted by	Sarah St. John
DRESSERS	Kathleen Arbour, Julie Clayton Linda Culbert, Yvonne Leduc
SOUND DESIGN	Rob Mitchell
SOUND ASSISTANTS	Rob Fairbairn, Michael Heaney
LIGHTING DESIGN	Stephen Truelove
LIGHTING ASSISTANTS	Doug McMillan, Betty Francis
PROPERTIES	Anne-Marie Davies
assisted by	Michèle Baddoo, Christine Feldman
CONTINUITY	Julie Clayton, Kathleen Arbour Betty Francis, Anne-Marie Frigon
MAKE-UP	Jen Hethrington
assisted by	Jessica Neil, Lisa Naumov
HAIR	Carol Walkey
PUBLICITY	Jenny Haynes
PROGRAM	Wendy Wagner
BOX OFFICE	Sandra Quirt
REFRESHMENTS	Jane Maslin, Adèle Vickers
HOUSE MANAGERS	Gwen Knight, Peter Jefferson

Produced by special permission of Dramatist Play Service.

*Kanata Theatre acknowledges with special appreciation the following friends who have provided items or services to the benefit of the play:*

Alan Dean Photography

Ron Evans

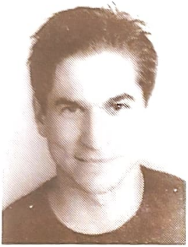
Susan Perry and Derek Ellis

Second Cup Coffee Co., Alcatel Gig-a-Bite Coffee Lounge

# BIOGRAPHIES



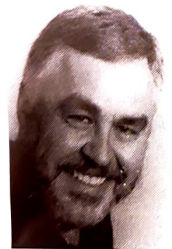
**SANDY WYNNE** (Director) is grateful for the substantial support of her family and Kanata Theatre friends in this, her directorial debut. She has been a member of the group since 1996 and has enjoyed a variety of administrative, production and backstage jobs, but reserves a special fondness for the diversity in acting roles she's been invited to play. Among her favourite parts are Sister Helena, the nun with a past in *The Prime of Miss Jean Brodie*, Ida, the 65 year old Jewish grandmother in *Cemetery Club*, Sissy, the town tart in *Come Back to the 5 & Dime*, *Jimmy Dean*, *Jimmy Dean*, and (of course) Sylvia, the dog in *Sylvia*.



**PAUL ARBOUR** (Hal) This is Paul's first performance in any capacity with Kanata Theatre. His previous on stage credits include *The Mute* in the O.L.T production of *The Fantasticks* and innumerable productions with the Espanola Little Theatre. Paul has been working in various technical capacities including assisting with the award winning production of *I Love You, You're Perfect, Now Change* with Zucchini Grotto. Paul has also worked in countless areas with the Orpheus Musical Theatre Society. He will be stage managing their upcoming production of *Damn Yankees*. Paul has trained in Improv with Ken Godmere and is also a Toastmaster.



**KATIE BETTS** (Claire) was most recently seen on the Kanata Theatre stage as Stella Meredith in *The Uninvited*. Her other acting credits with Kanata Theatre include Alice in *You Can't Take it With You*, Mina in *The Death of Dracula* and Faith in *Kindertransport*, to name a few. Katie is also active backstage and most recently has co-produced *The Wild Guys* and stage managed *Homeward Bound* among other tasks. She has been an active member of Kanata Theatre for over 7 years.



**DAVID PLOUFFE** (Robert) is appearing in his first Kanata Theatre production. In a former life David has performed in children's tours for Penguin Theatre and The Great Canadian Theatre Company. He has also appeared in local productions of such plays as *Tartuffe*, *Marat Sade*, *The Empire Builders*, and *Scientific Americans*. He has a degree in theatre and has taught at The Ottawa School of Speech and Drama and at the school of Performing Arts. David currently teaches drama and English at A.Y. Jackson High School in Kanata.



**CHERYL ZIMMER** (Catherine) is honoured to be playing Catherine in *Proof*, her first play at Kanata Theatre. Her other acting credits include Vicki in *Hide and Seek*, Margo in *The Wisdom of Eve*, Alais in *The Lion in Winter*, Gillian in *Bell, Book and Candle*, and Thelma in *A Trip to Bountiful*, all at Ottawa Little Theatre. She has also performed with the Tara Players in *A Touch of the Poet* and was seen in *A Gift to Last* with the Nepean Little Theatre. Cheryl is an optometrist in Kanata, and is also an avid hockey player and cyclist.

## PRESIDENT'S MESSAGE



Welcome to the first play in Kanata Theatre's 36<sup>th</sup> Season of Community Theatre. As you may recall, last season was an eventful one for us. We were hosts to the Eastern Ontario Drama League's Spring Play Festival, and for the first time in our history, we entered a play as well. Many of you have inquired how we fared in the adjudication process. We were delighted that our play, *Over the River and Through the Woods* received the award for Best Overall Production and our own Rosemary Keneford was named Best Director. Stewart Wheeler was named Best Actor in a Major Role, and Mary and Jim Holmes were honoured for Acting Excellence. Brooke Keneford, Susan Monaghan and Kareen Lively all received high praise from the adjudicator.

As Eastern Ontario's representative in Theatre Ontario's Festival in Sault Ste. Marie, we were again honoured. Rosemary received the award as Outstanding Director, and Jim was named Best Male in a Supporting Role. Brooke was also a finalist in that category and Stewart was nominated for Best Male Actor in a Leading Role. As well, Doug McMillan won an adjudicator's award for his lighting.

We were extremely gratified to receive such recognition and we thank you, our audience, for your continued interest and support.

Tonight we present *Proof*, winner of the 2001 Pulitzer Prize and Tony Award for Best Play, and a soon to be released major motion picture. You will be able to say you saw it here first! Enjoy!

Gwen Knight